



Wasaga Beach Minor Hockey Emergency Action Plan (Wasaga Beach Arena)

The coach, manager and trainer person should initiate a meeting at the beginning of the season to ensure they have the volunteers required for their Emergency Action Plan.

EQUIPMENT LOCATION



=emergency exits



ARENA INFORMATION

ARENA/FACILITY

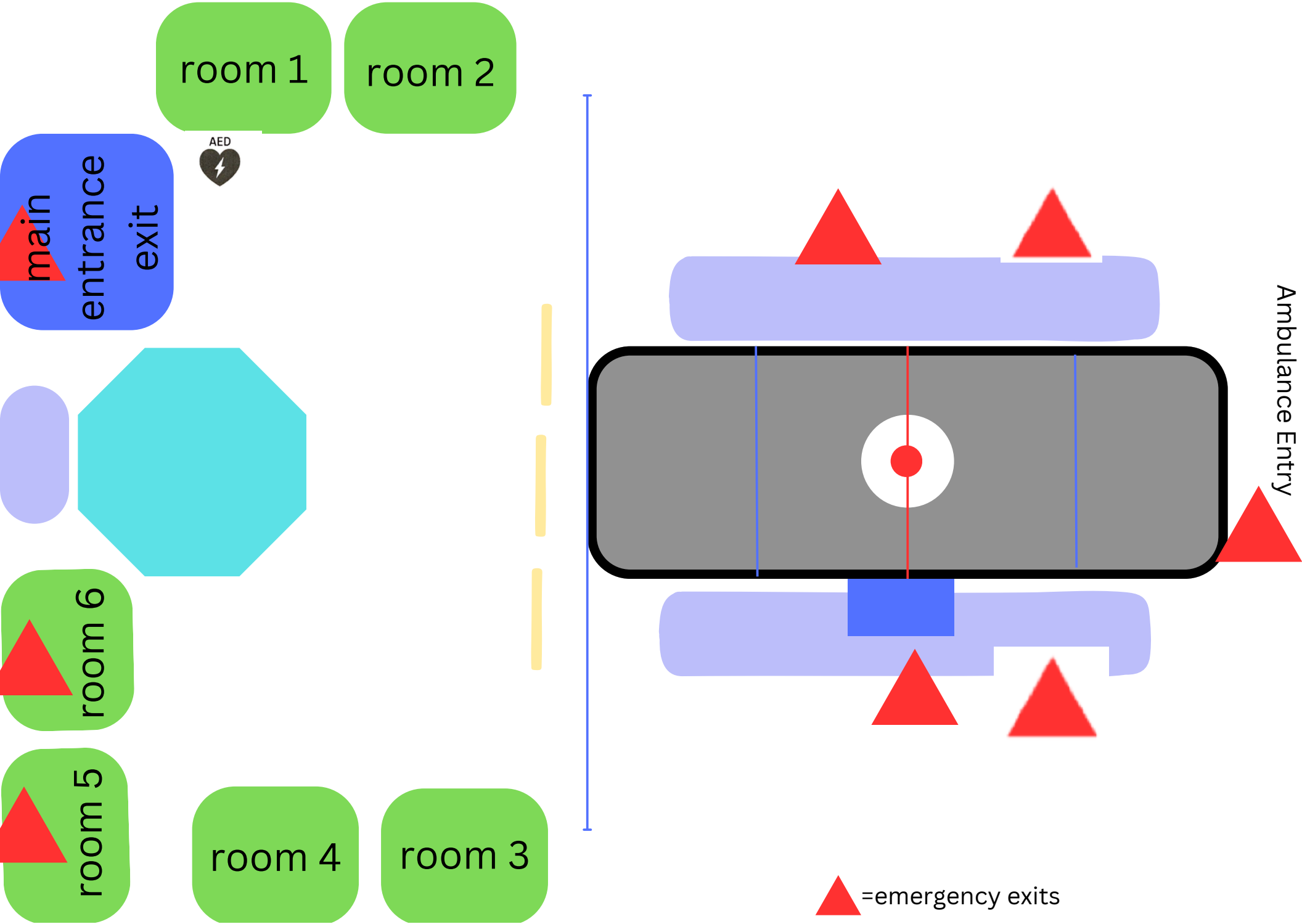
ADDRESS

PHONE NUMBER

Wasaga Beach Arena

425 River Rd W, Wasaga Beach, ON L9Z 2X2

(705) 429-0412





Wasaga Beach Minor Hockey Emergency Action Plan (Wasaga Beach Arena)

TEAM INFORMATION

TEAM:

MANAGER:

PHONE NUMBERS:

HEAD COACH:

PHONE NUMBERS:

ASST. COACH:

PHONE NUMBERS:

ASST. COACH:

PHONE NUMBERS:

TRAINER:

PHONE NUMBERS:

TRAINER:

PHONE NUMBERS:

TRAINER:

PHONE NUMBERS:

CHARGE PERSON:

PHONE NUMBERS:

CALL PERSON:

PHONE NUMBERS:

EMERGENCY SERVICES:

EMS, FIRE, POLICE

PHONE NUMBERS:

911

HEAD TRAINER:

PHONE NUMBERS:



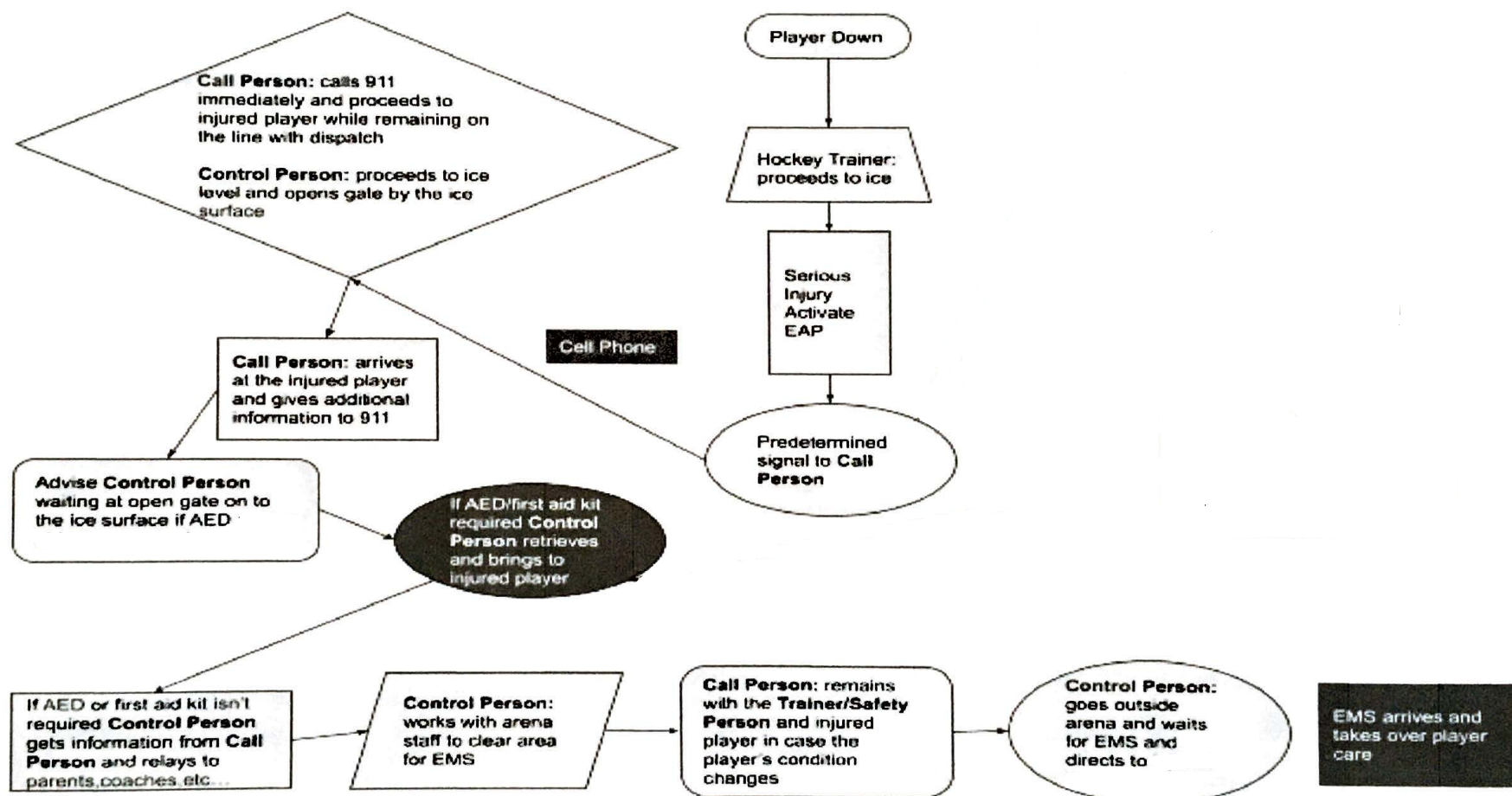
Wasaga Beach Minor Hockey Emergency Action Plan (Wasaga Beach Arena)

ROLES & RESPONSIBILITIES

<p style="text-align: center;">TRAINER/CHARGE PERSON</p> <ol style="list-style-type: none"> Initially take control of the situation. Instructs player to lay still and others not to move the player. Assess injury status of the player and decide if medical care is required. If the injury is serious then signal your call person. 	<p style="text-align: center;">CALL PERSON</p> <ol style="list-style-type: none"> Makes call when emergency assistance is required.(ensure call person's cell phone works in facility) Know location of alternate phones in the facility being played in. Ideally at all games and practices and not involved on the bench. Has a list of emergency phone numbers in the area of the facility. Has a diagram displaying specific directions and best route to the arena.
<p style="text-align: center;">CONTROL PERSON</p> <ol style="list-style-type: none"> Pre-determine the location of AED and other emergency equipment in the facility. Retrieving the AED and/or first aid kit and bringing it to the injured player if requested. Seeking highly-trained medical personnel in the facility if requested by the trainer person. Ensure teammates, other participants and spectators are not in the way of the trainer person. Advise opponents, on-ice officials, arena staff and parents of the steps being taken. Ensure emergency services get all information needed on location, situation and status of injured player. Meet emergency services on arrival and direct to the injured player. 	<p style="text-align: center;">IMPORTANT REMINDERS</p> <ol style="list-style-type: none"> The game official continues to assume the role of being in charge of the overall environment. It is important for officials to note that if the trainer person makes the signal for assistance that there may be a number of pre-determine people who will respond and will require access to the ice. Once emergency services are called, the official should send both teams to their dressing rooms.



Wasaga Beach Minor Hockey Emergency Action Plan (Wasaga Beach Arena)



See following
page for more in-
depth explanation
into what this
means

The back of the
arena where the
Zamboni gates
are open.

Control person works with arena staff to open Zamboni gates and move the Zamboni out of the way of the gates. This gives the EMS the ability to go straight onto the ice. After this continue with flow chart.

Extra:

The garage door opener on the left of the Zamboni gate opens the first Zamboni gate where the Zamboni is located. The right side of the Zamboni gate controls opens the guillotine gate onto the ice surface.